



This Issue Safer at Home Edition #27

- Workshop.....August 12th
- Lecture.....August 13th
- WQ Officer & Chairman Reports
- Virtual Quilt Shows, Lectures, & Classes
- Call for Entries
- Neighborly Guild Calendar
- Happy Hour last Friday of the month

Westside Quilters Quarterly Meeting

Lisa Erlandson

"Making Your Best Quilt"

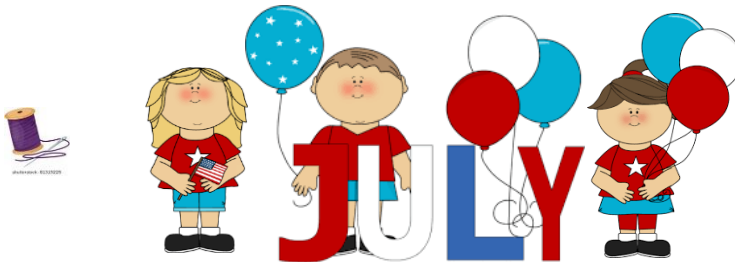
Saturday, August 13th

10:00am -12:30am. Social Hour at 9:30am

Lecture at 11 am

Short business meeting followed by WQ Quilters' Showcase.

Zoom meeting invitation will be sent to all members



Upcoming Workshops & More

- WQ is dark in July, but we are participating in the **Global Quilt Connection Sampler Platter** on July 30th and 31st. All members will be sent a Zoom link.
- "Fabric Postcards" **workshop** with **Carol Morrissey** Friday, August 12th. Registration is open!
- At our Saturday, **August 13th Quarterly Meeting** quilt judge and appraiser **Lisa Erlandson** presents "Make Your Best Quilt." What does a judge see when they look at a quilt? How does an appraiser determine the value of your quilt?
- Upcoming, September 10th **Karen Eckmeier** - will teach her workshop "Accidental Landscape Magic", details currently on website.
- Meetings and classes will continue on Zoom at least until 2023.

National Threading the Needle Day July 25th

"National Day" pictures are actual quilts.



PRESIDENT'S MESSAGE

As you've probably heard my husband and I have put our Westwood Hills home up for sale and will be moving out of state. When the decision was first made and our realtor announced that we really needed to pack up and remove half of our furnishings to open up the spaces and make our rooms seem larger and airier, we needed to start packing. We decided that one initial priority was my quilting studio behind our garage and the upstairs bedroom where a small sewing table, a Featherweight machine and a design wall had somehow migrated in the last couple of years. It took me three days to pack it all up, but it was done and the movers made their initial pickup and it was all gone to storage.



After the initial time-consuming chaos of packing and culling the house is ready and being shown and we are now in limbo. In between showings and the early morning race to put everything away that shows this house is actually still lived in, I suddenly have a fair amount of free time at my disposal which in my former life would have meant creative time in my studio. I'm suddenly a quilter who can't quilt...

Frustration abounds. So many times, I've thought how much I'd like to escape to my little personal space and just play with fabric! I did save out a small zippered kit with hand sewing tools, a few scraps and my Curve-let templates so I can play with those and I'm spending a fair amount of time online on Pinterest saving ideas to a Board I've called the New Studio.

It's sobering, though, to realize that a new studio is far away. First, we need to sell this house, buy another across the country, move our stuff, and set up home. I'm fairly sure that my husband will feel that having a working kitchen and bedrooms to sleep in will take priority over my sewing space, so we are talking months and months.

In the meantime, I'm enjoying the community of Westside Quilters. I'm researching items for the Weekly Update, meeting with the Executive Board, enjoying our online activities and living vicariously through your projects. So please send me photos of your latest projects to post to the Weekly and to social media. I need them right now...

Sally Wright
Westside Quilters, President



National I Love Horses Day
July 15th



National Kitten Day July 10th



National Words With Friends Day
July 19th



WESTSIDE QUILTERS

Westside Quilters members will all be able to participate in:
Global Quilt Connection Sampler Platter
on **July 30th and 31st**
All members will be sent a Zoom link.

Here's the presenter lineup for the July sampler platter!

Saturday July 30, 2022 (3 - 6pm eastern)

April Sproule: A Japanese Boro Stitch Sampler
Bridget O'Flaherty: Thread Painting a Chickadee
Jane Hauprich: Not Your Grandma's Hankies
Elizabeth DeCroos: Stained Glass Patchwork
Gunnel Hag: Create Your Own Fabric
Kelly Ashton: Y-Seams? Why Not!
Rachel Derstine: Artful Couching
Sarah Goer: Sewing Smooth Improv Curves
Tori McElwain: Classic Color Palettes

Sunday July 31, 2022 (3 - 6pm eastern)

Becky Campbell: Innovative Trapunto
Diane Harris: Beef Up your Backgrounds
Jennifer Houlden: Wild & Spectacular Flowers
Julia Graves: String Pieced Curves
Kathryn Pellman: Word Salad
Nanette Zeller: The Art of Using Placement Guides for Fusible Appliqué
Patricia Belyea: Designing Unique Hand Stitch Patterns
Tammy Silvers: Improvisational Piecing with a Touch of Structure
Trudy Cleveland: Shoot Your Quilt



World Emoji Day July 17th



Gorgeous Grandma Day
July 23rd



National Moon Day July 20th



Membership.....

Westside Quilters Renewal Time.....

..... Yes, yes sign me up!!!



Greetings Westside Quilters!

Thanks to Luann Jaffe on her excellent work as Membership Chair, I look forward to what she will do for WQ Philanthropy.

It is time to renew your Membership, and encourage new quilters to join us! The form is on the WQ website under "Membership". Please print and fill out the form, then mail it with payment to our P.O. Box. Payment can be by check, cash or credit. Thanks to those who have already signed up for continued fun, and I look forward to receiving more forms shortly.

Membership form can be found at: <http://www.westsidequilterslosangeles.org>

Amy Barer
Membership Chair



<p><u>National Bikini Day</u> July 5th</p> 	<p><u>National Fried Chicken Day</u> July 6th</p> 	<p><u>National Freezer Pop Day</u> July 8th</p> 
<p><u>Collector Car Appreciation Day</u> July 9th</p> 	<p><u>National Lipstick Day</u> July 29th</p> 	<p><u>Cow Appreciation Day</u> July 13th</p> 



A Friday workshop with:

Carol Morissey

www.ocaroldesigns.com

ocarolm@gmail.com

"Fabric Postcards"

Workshop Friday August 12, 2022

10:00am - 1:00 pm.

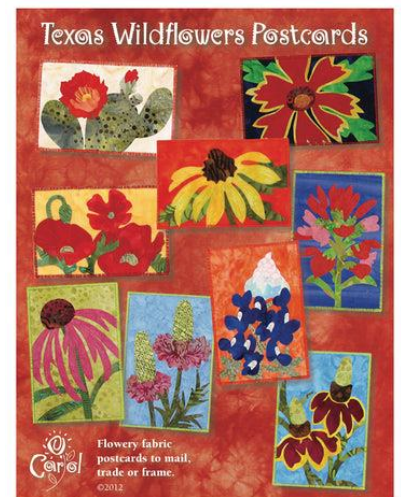
The workshop fee is \$30 plus a \$14 pattern fee (\$16 if it includes the heavy-duty interfacing).

"Fabric Postcards", is one of Carol Morissey's most popular workshops. These colorful little pieces are fun to create, they're quick, and they make great gifts. Plus, they're a standard size, so they can be easily and inexpensively framed! Carol has three different postcard collections from which to choose (pattern purchase is required for the workshop). And, as a bonus, if you give Carol enough advance notice, she will design a couple of original postcards just for your group!

Carol will share her favorite fusing techniques while we make colorful postcards using fused, raw edge appliqué. You can actually mail these postcards if you want, or use them as gifts, frame them, or swap with friends.

Each participant is required to purchase one of her postcard patterns (www.ocaroldesigns.com).

Please notice that you have the option to order a pattern that includes four pieces of Peltex, or you may order the pattern only, and purchase your own Peltex. Please order well in advance of the class to allow adequate time for mail delivery.



Supply List

1. Pencil and note paper
2. Wonder Under #805, or your preferred brand of paper backed fusible web. One yard is plenty.
3. A non-stick pressing sheet or a piece of parchment paper
4. A light box, or a bright window where you can trace
5. Scissors
6. Iron and ironing surface
7. Peltex 72F heavy duty interfacing or similar product (it's stiff, like a hat brim). Postcards measure 4" x 6", so you may purchase the amount of Peltex based on how many you wish to make. It should measure 20" wide on the bolt, which means that if you cut carefully, you can cut 15 pieces from half a yard. Some brands or types of heavy-duty interfacing such as this have fusible web on one side, both sides, or none at all. It doesn't matter which type you get because you can add Wonder Under to your background fabric or to the interfacing. I like the 72F because it has fusible on both sides.
8. Rotary cutter, ruler, and mat
9. Optional but useful: tweezers

Morrissey workshop info continued

Fabric:

Each postcard requires two 4" x 6" pieces of fabric, one for the front and one for the back.

These can be the same, or two different fabrics. The pieces for the appliqué shapes are small, so gather your colorful scraps. Batiks are recommended because of their tight weave.

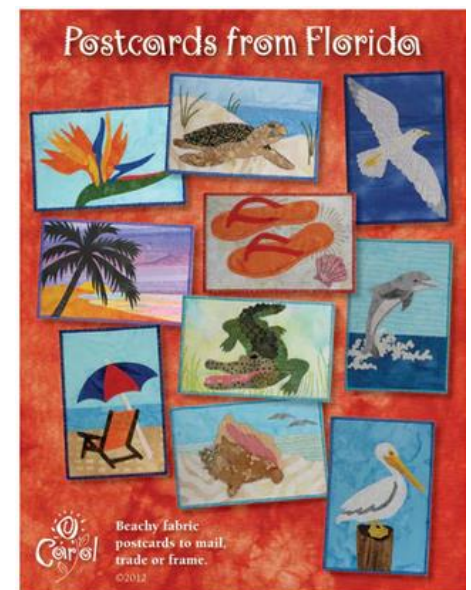
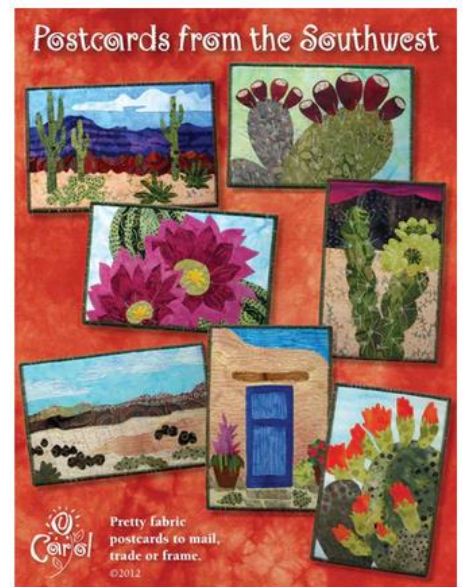
Sewing machine: A machine is not required for this class. However, you may choose to do some free-motion stitching on the appliqué later. I also zigzag or satin stitch around the outer edges of the cards when they're finished.

Carol Morrissey

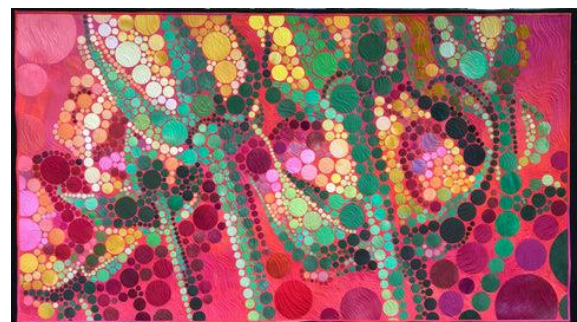
Bio

Carol Morrissey is a fifth-generation Texas quilter who embraces that heritage with enthusiasm. Her work reflects her love of photography, gardening, nature, and painting. Carol began sewing clothing as a child but didn't make her first quilt until she was in her thirties. Her work has been exhibited and published internationally, and is in many private collections. She enjoys providing programs and workshops to quilt guilds and other groups, sharing her love of quilting, her inspirations, and her techniques with others.

Carol's favorite quote: "If you like something, what's so bad about doin' a lot of it? You never know when it's going to end." -Elvis Aaron Presley



From Carol's Gallery...





WQ Quarterly Meeting

Lisa Erlandson

www.lequilts.com <https://www.littlepupdesigns.com/>

"Make Your Best Quilt"

Saturday, August 13, 2022

10:00am -12:30am. Social Hour at 9:30am.

A Zoom link will be sent to members

At our Quarterly Meeting quilt judge and certified quilt appraiser **Lisa Erlandson** presents "*Make Your Best Quilt.*" What does a judge see when they look at a quilt? How does an appraiser determine the value of your quilt?

This lecture examines the features a judge may look for in choosing a winning quilt as well as the qualities of a quilt that may increase or decrease the appraised value. More importantly, we will talk the simple things you can do to improve your skills. Even if you never intend to enter your quilt into a competitive contest or have it appraised, you want to make the best quilt you are capable of! Tips will be given to help you make the best quilt you can, whether the quilt is heading to a contest or to cover a loved one.

Bio

Lisa Erlandson is a compulsive quilt collector whose habit has led to several quilt-related specialties. She is an AQS Certified Appraiser of Quilted Textiles, lecturer, quilt show judge, teacher and quilt historian. And, she is a past president of the American Quilt Study Group. Lisa has appeared on '*The Quilt Show with Alex Anderson and Ricky Tims*'.

She learned to sew as a child but considered it punishment (and maybe it was). She re-discovered sewing in the mid 1980s as a drama teacher and made her first quilt in 1991. Lisa has a Master of Arts degree in Public Communication from the University of North Texas. She taught junior high school, high school and college before deciding to focus on the quilt world.

National Hot Dog Day July 20th



National Ice Cream Day
July 17th



National
Hire a
Veteran
Day
July 25th



Leadership.....

Works in Progress

What type of quilter are you? Do you work on one project at a time until the top is finished or quilted and bound? Do you have several works in progress that you work on over a period of time? Or are you the “squirrel” sort of quilter, jumping from one UFO (unfinished object) to something new? I have to admit that I fall into the squirrel category much of the time, and I suspect that many of you do too. It’s just so tempting when we see bright and shiny new fabric or a quilter we like issues a new interesting pattern. And then there are monthly block programs that surely won’t take that much time! - it’s only just one a month!

And what about all the virtual classes that we can join over Zoom these days? I have participated in many of these, but it only adds on to the pile of WIPs. Though I have learned so much from these classes or teachers that it is worth it. And that is part of what quilting is for me - a learning experience using beautiful fabric that becomes a beautiful quilt when cut, sewn, quilted and bound. Though as I wrote before, the squirrel part of me usually moves on before the quilt is actually quilted, leaving unquilted tops that need some attention. A goal for this year.

Now, if you are better than me and your quilts actually get quilted, show them off to the members of Westside Quilters! You can do this two ways:

- For the weekly email updates, Facebook and Instagram, send photos to westsidequilters@Yahoo.com

- For the Quilters’ Showcase at our Quarterly meetings, send photos to quilterdel@aol.com. Del will send an email to members of WQ the week before the meeting with the date she needs the photos.

Terrie Dorio
WQ Vice President



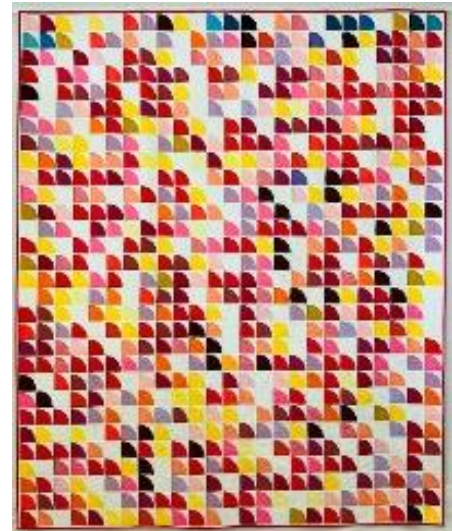
Barbara Weigold	July 11
Matt Randall	July 21
Rhoda Novak	July 23
Susanne Cole	July 26
Judith McCormack	July 27
Sandra Abramowitz	July 28
Marianne Simpson	July 29



Treasurer

Karynn Dittmar, Treasurer

OPENING BALANCE AS OF 6/1/22		6642.55
INCOME		
Membership Dues / Donations	1160.00	
Workshop Fees	60.00	
Bank Adjustment	0.00	
Guest Fees	0.00	
Fabric Sale Fundraiser	0.00	
Amazon	16.45	
TOTAL INCOME		1236.45
EXPENSES		
Workshop Expense	0.00	
General Meeting Expense	0.00	
Charitable Contributions	0.00	
Administrative Expenses	0.00	
Membership Expenses	0.00	
SCCQG Insurance	0.00	
Website	0.00	
PO Box Rental	0.00	
Philanthropy / Ed. Expense	0.00	
Printing / Promotion / Admin.	0.00	
Square Up/Pay Pal Fees	5.57	
Government Fees	45.00	
TOTAL EXPENSE		50.57
NET INCOME		1185.88
CLOSING BALANCE as of 6/25/22		7828.43



Using color in place of text, this quilt spells out
Roe vs Wade as defined in Wikipedia



Website and Social Media:

Our Instagram, Facebook and Weekly update
need your photos! Please send them to
westsidequilters@yahoo.com.

Sally Wright
Website & Social Media Manager.



Philanthropy.....

As we start a new term of the Westside Quilter's Executive Board Lisa Drew & Virginia Marshall will be staying on as Philanthropy Chairs. We would like to thank Nancy Kawahara for everything she did for Philanthropy & welcome Luann Jaffe as she joins us on the committee.

We are reaching out to see if there are any organizations you would like to support with our quilts.

We will continue to support Upward Bound and their families in transition.

We have contacted Las Familias Del Pueblo who we have donated to in the past & they are excited at the opportunity to receive children's quilts from us again. Las Familias Del Pueblo is a community center downtown for sweatshop workers and their families. They serve more than 500 families a year. The center has a kindergarten/first grade charter school that provides a full day curriculum and have an afterschool program.

We are also looking for small project ideas along the lines of the pillowcases and placemats we have made.

Please contact us at philanthropy@westsidequilterslosangeles.com if you have any ideas for us.

Thanks!!
Lisa, Virginia & Luann
Philanthropy Co-chairs



<p><u>National Get Out of the Dog House Day</u> July 18th</p> 	<p><u>National Day of the Cowboy</u> July 23rd</p> 	<p><u>National Fried Clam Day</u> July 3rd</p> 
<p><u>National Different Colored Eyes Day</u> July 12th</p> 	<p><u>National Barbershop Music Appreciation Day</u> July 13th</p> 	<p><u>National Thermal Engineer Day</u> July 24th</p> 

Calls for Entry July 2022

So happy to say the quilt shows and exhibits are slowly coming back to life even as the pandemic continues. Nothing for AQS right now - their shows start up again in February with calls for entry starting this Fall, but the Mancuso's PIQF is coming up soon. Right now, as always, before sending off your entry to any show, double check to make sure that the event is actually taking place. See below. Hopefully as 2022 progresses there will be more opportunities. Watch this space!

For some great information from a veteran on how to get your work shown see this blog entry from Sue Bleiweiss <https://suebleiweiss.blog/2018/06/14/getting-your-work-out-there/>

I also recommend this blog post from Lyric Kinard on how to choose venues to display your work - <https://lyrickinard.com/2019/05/showing-your-work-choosing-venues/> In fact, there is a whole series of blog posts on getting your work out there that is well worth your time.

Here are some suggestions for quilt entry photography from International Quilt Festival.

PHOTOGRAPHING YOUR QUILT FOR SUBMISSION

Continuing our notifications for ways to display your quilts and textile pieces to a wider audience... Entering shows is not difficult, but to begin here are a few guidelines:

- Always make sure you read everything in the call including the calendar, requirements, rules, etc. Especially the rules! Will save headaches and disappointment later on.
- Keep a record on your entries so you won't be caught with a quilt needing to go two places at once. Having to remove a quilt from a show or exhibit because you misread the exhibition dates is a no-no. Ask me how I know...
- Having a great photo of your quilt - straight on, in focus, not on a bed or held up showing hands and feet, super important. There is lots of great info on quilt photography on line. Google!
- Don't be intimidated or depressed by a rejection! There are lots of different reasons why a quilt doesn't fit into a specific show. It is usually not because your quilt is bad!

The calls below are just a sample of the many opportunities out there. For more search "Fiber Art Calls for Entry" or "Quilt Calls for Entry"

Current Calls for Entry:

Mancuso Quilt Fest - Innovative, Traditional, and Mid-Century Mod/Modern Quilt (Springfield, MA)

<https://www.quiltfest.com> August 11-13, 2022

Entry deadline July 5, 2022

Mancuso Quiltfest Wall Quilt Competition (Springfield, MA) <https://www.quiltfest.com>

August 11-13, 2022

Entry deadline July 5, 2022

Excellence in Fibers, 2023, Fiber Art Now <https://www.fiberartnow.net/calls/>

Entry Deadline August 23, 2022

Quilt National '23 The Best in Contemporary Quilts at the Dairy Barn.

https://dairybarn.org/exhibits/call-for-entries/#qn23_prospectus

Entry Deadline September 5, 2022

Pacific International Quilt Competition: And Sew the Adventure Begins (Santa Clara, CA) Oct 11-17, 2022 [Upcoming Shows » Mancuso Show Management \(quiltfest.com\)](#)

Entry Deadline September 7, 2022

Pacific International Modern Quilt Competition: Mid Century Mod (Santa Clara, CA) Oct 11-17, 2022 [Upcoming Shows » Mancuso Show Management \(quiltfest.com\)](#)
Entry Deadline September 7, 2022

Pacific International Wearable Art Competition (Santa Clara, CA) Oct 11-17, 2022
[Upcoming Shows » Mancuso Show Management \(quiltfest.com\)](#)
Entry Deadline September 7, 2022

Rocky Mountain Quilt Museum - Logs on a Roll | Log Cabin Quilts 2023

Exhibit dates: April 17—July 15, 2023

Modern, contemporary, or traditional - straight furrows, barn-raising, or mixed-up conglomerations of log cabin blocks. RMQM is looking for amazing log cabin quilts for the newest call for entries.

<https://www.rmqm.org/call-for-entries.htm>

Online Entry—November 1-30, 2022

Sally Wright
sally@sallywrightquilts.com





A NEIGHBORLY GUILD CALENDAR

July 2022	
July 6 Santa Monica Quilt Guild www.santamonicaquiltguild.org	<u>TBD</u>
July 10 & 11 San Fernando Valley Quilt Guild www.sfvqg.net	<u>Angie Kirk</u> Workshop: Quilted Coat Class Lecture: Quilting Pleasures
July 11 LA Modern Quilt Guild www.LAMQG.org	Meeting
July 13 Glendale Quilt Guild www.glendalequiltingguild.org	<u>Pam Hadfield</u> <u>Trunk Show</u>
July 17 African American Quilters of Los Angeles www.easysite.com/aaqla	<u>Meeting</u> – third Sunday of the month
July Westside Quilters www.WestsideQuiltersLosAngeles.org	<u>Dark</u>
July South Bay Quilters Guild www.southbayquiltersguild.org	Dark
August 2022	
August 3 Santa Monica Quilt Guild www.santamonicaquiltguild.org	<u>Carol Wilhoit</u> Lecture: <i>Get Your Stash Together: Organization for Quilters</i>
August 8 LA Modern Quilt Guild www.LAMQG.org	<u>Audrey Esarey</u> Meeting & lecture:
August 12 & 13 Westside Quilters www.WestsideQuiltersLosAngeles.org	<u>Lisa Erlandson</u> Lecture: Making Your Best Quilt Workshop: Carol Morissey – Fabric Postcards
August 13 Glendale Quilt Guild www.glendalequiltingguild.org	<u>Mary Ellen Healy Sakai</u> Workshop: Machine Quilting Lecture: “The Beauty of Imperfection”
August ?? San Fernando Valley Quilt Guild www.sfvqg.net	<u>Dark ???</u>
August 21 African American Quilters of Los Angeles www.easysite.com/aaqla	<u>Meeting</u> – third Sunday of the month
August ?? South Bay Quilters Guild www.southbayquiltersguild.org	General Meeting”
August ?? Simi Valley Quilt Guild www.simivalleyquiltguild.org	<u>TBD</u>

At Home and Surfing the Internet & some venturing out *(Temporarily replacing OUT AND ABOUT)*

LACMA offers online art classes? Here's one for this coming Friday...

https://www.lacma.org/event/adult-art-class-friday-art-night-collage-landscape?fbclid=IwAR3cvbXQdBlxguNRddUyJbA5Ac7sEKI74mhgVNSxMJNjUDn2BREN_M-S_5U

"Stitch and Flip" in denim! from Patricia Belyea of Okan Arts...https://okanarts.com/blogs/blog/stitch-flip-2-0?fbclid=IwAR1G_ISIVXG4ndRtQvHi1hJMbcgSrtSeR-oFC-iGoMbr6bTGAO1i4vC6vpM

365 Challenge Sampler Quilt project from Kathryn Kerr...

<https://kathrynkerr.teachable.com/p/365-challenge-quilt-star-wonder>

The classes and teachers for the **upcoming PIQF in October**...<https://www.quiltfest.com/upcoming-shows-and-events/pacific-international-quilt-festival/>

A free dyeing class with Shannon Brinkley...<https://shannon-brinkley.mykajabi.com/flowerstofabric?fbclid=IwAR2AF1LIL8QvpPQ5BwHMWnNls-cruoq24gcDEIZd8STeT4fhUPAsInlLehk>

How to make a design wall...<https://shannon-brinkley.com/blogs/shannon-brinkley-studio-1/how-to-make-a-design-wall?fbclid=IwAR3dee9BZPYC9oxKKf56BqE07NzuKjldmpA4hDJADscRA1KUKpOUkM8n1I>

Textile Talks - **Quilt National Then and Now**...<https://www.youtube.com/watch?v=2AuQBdmYZZk>

Get to know **Jean Wells** of the Stitchin' Post...<https://www.youtube.com/watch?v=V2MOY-3j9-Q>

Getting ready for July 4th...https://weallsew.com/red-white-and-blue-star-banner/?j=799114&sfmc_sub=33975127&l=330_HTML&u=19881408&mid=10964997&jb=19004&utm_source=BERNINA%20of%20America&utm_medium=email&utm_campaign=WeAllSew%20big%20list-automated&utm_content=WAS+Big+List+--+June+16%2c+2022%2c+Fourth+Of+July+Projects

Quilting Arts podcasts? <https://www.quiltingdaily.com/category/quilting-arts-podcast/>

A great new resource for finding online classes...

https://www.academyforvirtualteaching.com/quiltclasscalendar?fbclid=IwAR12SF_XATJ3pkkoS26KkvpC_FeIT6nMa-qW5ppNVoa1h_I8riaJMCE-278

A curved piecing tutorial from AQS...<https://www.quiltingdaily.com/curved-piecing-quilt-tutorial-a-curve-roundup/?fbclid=IwAR35HxIZOnOpuDGpIrn59oCDjVFNq99M-UlKaSbTL1GOXsOD1-GuYSX66Rs>

Quilters Take a Moment announces schedule for next September's virtual event...<https://www.qtm2022.org>

Mancuso Quiltfest announces dates for upcoming shows including PIQF...<https://www.quiltfest.com>

Quilt Festival Long Beach - August 4-6, 2022

See the Speaker Calendar of the Southern California Council of Quilt Guilds for additional events. Go to www.sccqg.org scroll down to the bottom of the homepage and click on the box "Speakers" and see other SCCQG guilds and speakers into 2022



Featured WQ Member:

Amy Barer – Incoming WQ Membership Chairperson
Interview and write up by Pat Karasick

Amy Barer is a charter member of Westside Quilters of Los Angeles. She doesn't belong to any other guilds. She joined WQ to belong to a local guild. Quilting drew her intentions when she started to have more free time. A 1993 quilt show in South Bay got her started. She was so amazed by the quilts and excited about the different patterns. She really likes diamond and geometric shapes. Her focus now is on embroidery projects. She has shared some of these works during workshops and sew-ins.



Amy is a classical sewer. Her favorite thing is her treadle machine. Husqvarna Viking Rose is her favorite machine to piece with. She doesn't always finish a project, there are many UFOs in her house.

While sewing she often drinks Chai latte made with no-fat milk, no coffee for her. She is currently reading Kingfisher by Patricia McKillit.

Her next project will be for philanthropy, probably using a pattern from one of the 3 Yard quilt books by Donna Robertson. Amy prewashes only big pieces of fabric. Smaller pieces she will steam to preshrink them. She rarely uses starch or finish while pressing. She loves that her stash has a purpose.



Her tip to share is try any pattern. Practice may not make it perfect, but it will get done eventually. Her favorite teacher is Jenny Doan, although she admitted that she did have other favorite instructors.

Amy wishes for World Peace and more quilters to join Westside Quilters. She is currently on the Executive Board as the Membership Chair. Welcome back to the Board!

Amy added "I've been working on smaller projects mostly, participated in some Block Lotto drawings, so I'm sending photos of a Dresden Plate I contributed, a wall hanging and a Memorial Quilt for my Father-in-Law.



Member Articles and Stuff...

Seeking Advice...

Thank you to Prima Casetta for replying to Patti Post's question about cordless irons, here is Prima's experience:



I had a cordless Panasonic iron several years ago and I loved it. I am left-handed and iron cords tend to drag across my ironing, even those that come out of the middle of the iron instead of to one side. The cordless iron solved that problem.

Although the iron is cordless, the base has a cord that is plugged in. A cordless iron takes a bit longer to heat up than ordinary iron, but once it is hot, it stays hot, as long as it is returned to the base regularly. Notice how often you set your iron down as you use it and you will see that this should not be a problem.

If you have an ironing board with an iron rest, you will have to give up a bit of ironing surface to hold the base. On the other hand, the base keeps the iron stable. Also look at the angle that the iron sits on its base. My Panasonic base held the iron at a very comfortable angle.



Editor's Note:

Is there any good news these days????

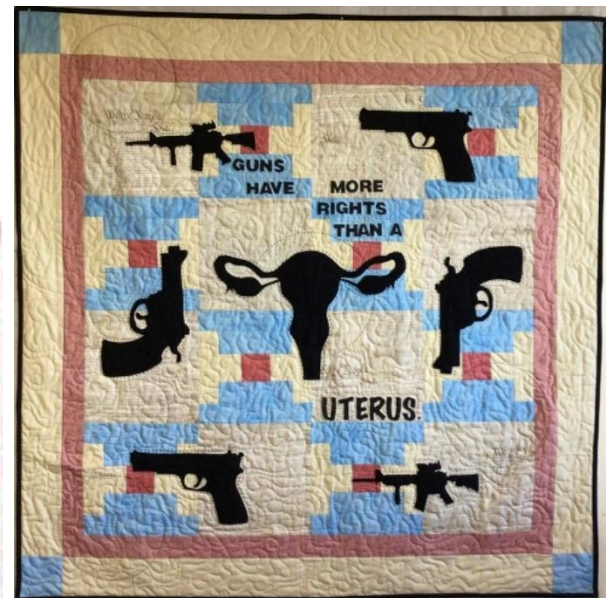
I feel like screaming!!!

Thank you to the many creative quilters, who have expressed their outrage of current events so beautifully in fabric!



Keep Stitching, Stay Safe and Stay Healthy.....

Debbie Nussbaum
Newsletter Editor



Executive Board Minutes, Saturday, June 11, 2022

Meeting called to order 10:10 A.M.

Excused: Karynn, Del, Nancy

Welcome Amy to the Board as Membership

President: Minutes of the May meeting were approved as written. Motion made by Barbara, seconded by Lisa.

Nancy Sharpe's daughter passed away. Sally will send a card.

After August, meetings will be on Zoom to accommodate Sally's move. Time change will be adjusted to Huntsville, Alabama time.

Vice-President: Terrie will be attending the orientation meeting of the SCCQG (Southern California Council of Quilting Guilds) in July.

Secretary: Remember to speak up.

Treasurer: Checks received for membership. Luanne will deliver them. Phyllis was paid.

Membership: Luanne will meet with Amy to exchange membership information that is on her computer.

Programs: July is dark, members will be sent the link for Global Connections. August workshop is open for registrations. June 24 will be the last Happy Hour as attendance is down.

Sew-ins will be incorporated with a lecture. This format has proved to be popular. Last one was attended by 24 people.

Nancy is preparing a new survey to be distributed to the members.

Everything is booked through 2023 in a virtual format. All contracts are received and signed. Information will be on the website and published in the newsletter.

Philanthropy: The team had a meeting yesterday. Looking for new ideas for a block and or projects. Place mats is still on-going. Past projects: pillowcases and heart pillows. Possible project: dog beds for shelters. Chemo comfort quilts 54"x 45" requested by St. John's. Marianne has a contact there. Only need 8-10 at a time as storage is an issue.

Roberta and Marianne have tops that need to be quilted. Luanne can help.

Lisa will contact La Familia as a possible donation organization.

Newsletter: Deadline is June 26, 2022.

Website: Requests photos. Seems to be a confusion of which email to send quilt photos to. Weekly updates address is: Westsidequilters@ Yahoo.com

Del compiles photos for the quarterly meetings. Photos should be sent to her at: quilterdel@aol.com

Terrie will include this information in her next newsletter article.

New Business: Amy would like to spearhead a membership drive handing out information in person at open quilt shops. Suggested Sewing Arts at their new location in July/August. Long Beach International quilt show. Sally will check to see if tables are available or could we put a business card size ad in the program.

No meeting in July.

Next meeting: Sunday, August 7, 2022, 12:00 P.M. in Luann's backyard, snacks are welcome

Address: 3115 Corinth Ave. LA 90066

Respectfully submitted,

Pat Karasick

Chrispsk@aol.com



Next Executive Board Meeting

The next meeting of the Executive Board will be held, August 7, 2022
All members of Westside Quilters are welcome to attend with prior notice to
Pres@WestsideQuiltersLosAngeles.org.



Our Mission

A new kind of guild organized for educational and charitable purposes; to promote cooperation and the exchange of ideas among quilters; to instruct members in methods and techniques of traditional and contemporary creative quilting; to serve mini-groups and their philanthropic endeavors within the community; to inspire personal achievement.

Officers 2020-2021

President	Marianne Simpson
Vice President	Barbara Marom-Pollack
Secretary	Terry Dorio
Treasurer	Karynn Dittmar
Program	Pat Karasick, Del Walker, and Cindi Garacochea
Membership	Luann Jaffe
Newsletter	Debbie Nussbaum
Philanthropy	Nancy Kawahara, Virginia Marshall, and Lisa Drew
Website Manager	Sally Wright

Appointed Positions

Hospitality	Kim Ryan, Matt Randall
Meeting Set-Up/Take-Down	Marianne Simpson Lisa Drew and Sonja Daniel
Photographer	Sally Wright
President Emeritus	Roberta Walley

Mailing Address **Post Office Box 641925
Los Angeles, CA 90064**

Website

www.WestsideQuiltersLosAngeles.org

Facebook **We're on Facebook. Check out the banner on the WQ website home page (lower center).**

Amazon **There is a boxed message in the lower center of our website home page giving a direct link to Amazon. By using this link, anything you purchase earns a 4% "dividend" paid directly to WQ. This only works if you enter the Amazon website from the WQ website link.**

iGive.com **This is another way to benefit WQ when shopping on the Internet. Here you need to register (the iGive.com logo appears in the lower center on the WQ website home page and links you directly to iGive.com). More than 800 Internet retailers participate (Barnes & Noble, Bed Bath & Beyond, Enterprise Rent-A-Car, Lancome -- to name a few). Follow the instructions at iGive.com.**

Non-Profit Status **Westside Quilters is tax-exempt from Federal income tax under section 501(c)(3) of the Internal Revenue Code, and classified as a public charity under section 170 of the Code, according to the determination letter dated May 26, 2011 received from the Internal Revenue Service. The effective date of exemption is June 17, 2010. Donations to Westside Quilters are fully tax-deductible for individuals and other entities such as corporations, partnerships, trusts; Westside Quilters is qualified to accept tax deductible bequests and gifts or transfers of gifts.**

F.E.I.N. 27-3145733
(Federal Employer Identification Number)

